

### General

The PrecisionCell GT features extra heavy-duty construction to meet the rigorous demands of gas turbine rotary machinery air filtration applications. They may also be utilized where extreme velocity or turbulence have rendered other products to be ineffective. PrecisionCell GT filters are available in ASHRAE efficiencies of 60-65% and 90-95% in either single or double header versions.

### Features

The PrecisionCell GT offers a high dust holding capacity for increased service life, eliminating costly downtime and maintenance associated with filter change out. The media is manufactured of a wet-laid, moisture resistant, dual layer micro-fine fiberglass with high tensile strength and long service life. The heavy gauge hemmed-edge corrugated aluminum separators offer increased pack rigidity with optimal pleat spacing.

The heavy duty corrosion-resistant steel frame and expanded metal faceguards on both the air entering and air leaving sides protect the media pack. Retainer straps and faceguards on both sides prevent filter collapse and maintain rigidity in elevated resistance situations and blow back from turbine surges.

### Physical Data

**Frame:** Heavy duty corrosion-resistant steel

**Media:** Dual layer wet-laid micro-fine fiberglass, sealed with class 1 urethane

**Separators:** Hemmed-edge corrugated aluminum

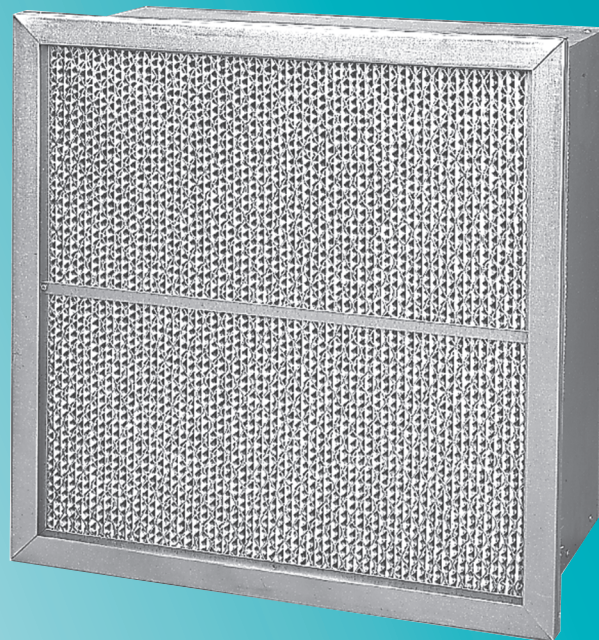
**Headers:** 13/16" wide corrosion resistant steel

**Faceguards:** Galvanized steel expanded

**Gridstraps:** Aluminized steel "T" strap downstream and horizontal strap upstream

### Important Features

- Dual layer media for increased service life
- Faceguards and grid straps
- Media pack stabilizer



Nominal Depth (inch)	Efficiency	Nominal Size HxWxD (inch)	250 fpm		375 fpm		500 fpm		625 fpm		Media Area (sq.ft.)	Weight Each (lbs.)
			cfm	pd	cfm	pd	cfm	pd	cfm	pd		
12	65%	24x24x12	1000	.20	1500	.35	2000	.45	2500	.57	140	26
		24x12x12	500		750		1000		1250		69	14
12	95%	24x24x12	1000	.25	1500	.45	2000	.65	2500	.78	140	27
		24x12x12	500		750		100		1250		69	14

Notes:

1. PD represents clean pressure drop in inchw.g. The recommended final pressure drop is 1.5 inch w.g.
2. Operation down to zero velocity is satisfactory for all models.
3. Performance tolerances conform to section 7.4 of ARI Standard 850.
4. Performance values stated may be averages typical of the products listed. Contact factory for actual performance test reports on specific products.
5. Performance values shown in this publication may be averages or estimates intended to generally represent product styles. Always contact factory for latest actual test data on specific Flanders Precisionaire models.

## Guide Specifications

### 1.0 General

- 1.1 Medium and high efficiency gas turbine rigid filters shall be PrecisionCell GT extended media separator type filters as manufactured by Flanders.
- 1.2 Filter sizes, efficiencies and capacities shall be as scheduled on the drawings.

### 2.0 Filter Construction

- 2.1 Filters shall be constructed by pleating a continuous sheet of moisture-resistant dual layer, wet-laid micro-fine glass media into closely spaced pleats with hemmed-edge corrugated aluminum separators.
- 2.2 The filter pack shall be compression sealed into a 24 ga. corrosion-resistant steel frame.
- 2.3 The enclosing frame shall be assembled in a rigid manner and shall incorporate a single or double header as required by job conditions.
- 2.4 Corrosion-resistant steel expanded metal face-

guards shall be installed on the air entering and leaving sides.

- 2.5 1/2" corrosion-resistant steel "T" straps shall be installed on the air leaving side and horizontal strap on air entering side.
- 2.6 Filters shall be UL 900 Class 1 listed.

### 3.0 Performance

- 3.1 Initial and final resistance shall not exceed the scheduled values.
- 3.2 Media area must equal or exceed that of the specified filter.
- 3.3 The average efficiency shall be as determined by the ASHRAE Standard 52.1 and 52.2 test methods.
- 3.4 The manufacturer shall guarantee performance as stated in the literature within tolerances as outlined in section 7.4 of ARI Standard 800.



Flanders Corporation  
531 Flanders Filters Road  
Washington, NC 27889

Phone: (252) 946-8081  
Fax: (252) 946-3425  
Toll Free: (800) 637-2803

Website: [www.flanders-ffi.com](http://www.flanders-ffi.com)

REPRESENTED BY: