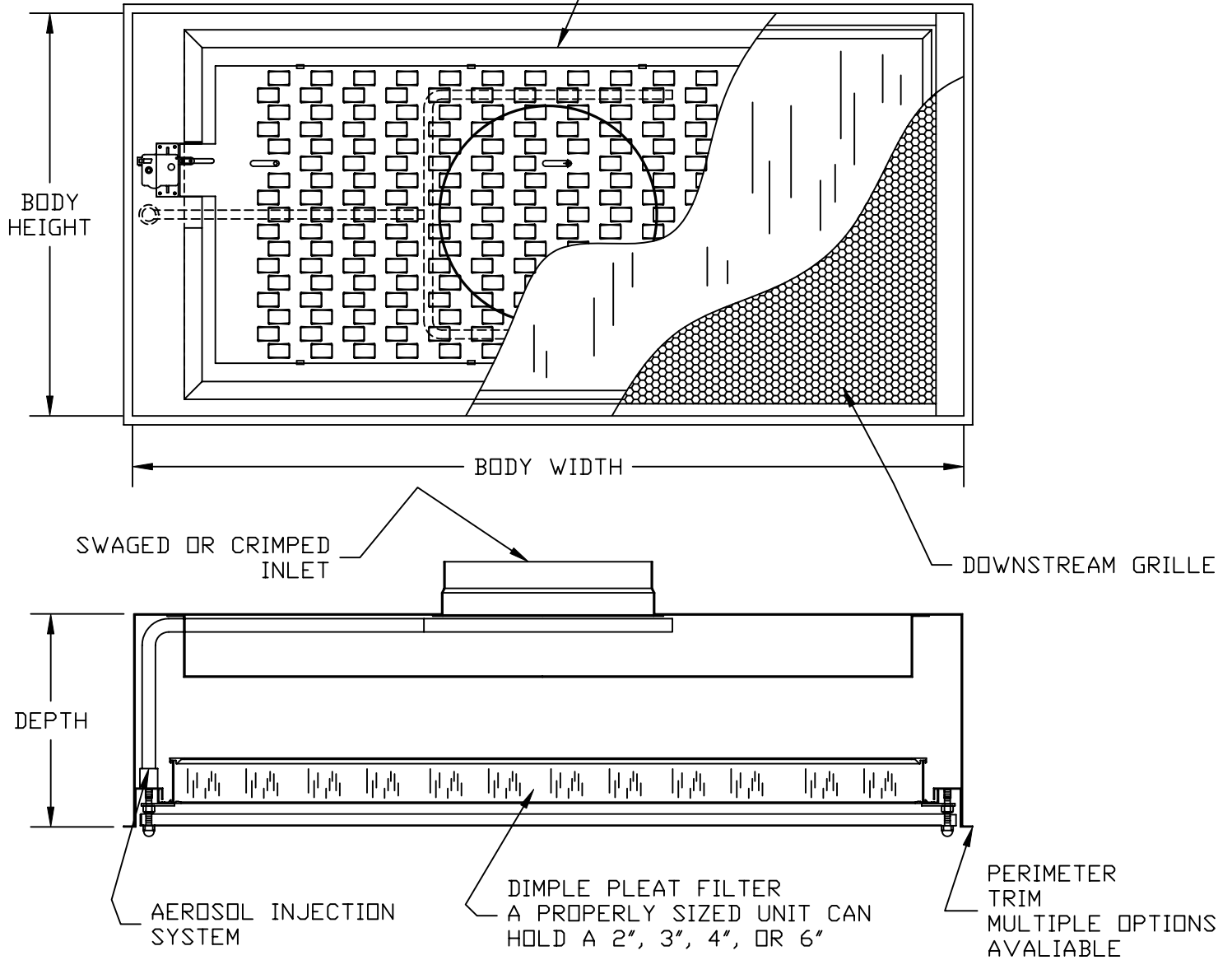


AIR CONTROL, DISTRIBUTION, AND UNIFORMITY PROVIDED BY THE ATECS, Inc. PATENTED DESIGN THROUGH A PARTNERSHIP WITH FLANDERS PRECISIONAIRE



UNIT DEPTH RESTRICTIONS		TOTAL UNIT PRESSURE DROP (100 FPM)		
FILTER UTILIZED	HOOD MINIMUM DEPTH	99.99%	99.9995%	99.99999%
2"	8" TALL	0.68	0.79	0.82
3"	9" TALL	0.61	0.68	0.78
4"	10" TALL	0.51	0.56	0.69
6"	12" TALL	0.41	0.51	0.55

This drawing and the information contained thereon is the property of Flanders Corp. and cannot be reproduced in whole or in part, nor delivered to others without the express written permission of Flanders Corporation.



SIZE DESIGNATOR	BODY HEIGHT	BODY WIDTH
E0781	22-11/16"	46-11/16"
E0881	22-11/16"	22-11/16"
E1896	10-11/16"	46-11/16"
E2482	22-11/16"	34-11/16"

DR: S. WINDLEY	DATE: 12/12/05	SCALE: 1/8" = 1"
TITLE: ESD MODEL 22 DATA SHEET		TOL: N/A

- 1.) CONTACT FACTORY FOR NON STANDARD SIZES
- 2.) ALL TEST DATA SHOWN CONTAINS AN AEROSOL INJECTION SYSTEM.
- 3.) UNIT HAS BEEN TESTED TO HAVE VELOCITY UNIFORMITY WITHIN ±5%.

<b>FLANDERS</b> FOREMOST IN AIR FILTRATION	DRAWING NO. RSW-ESD-1	REV. 0
---	-----------------------	--------